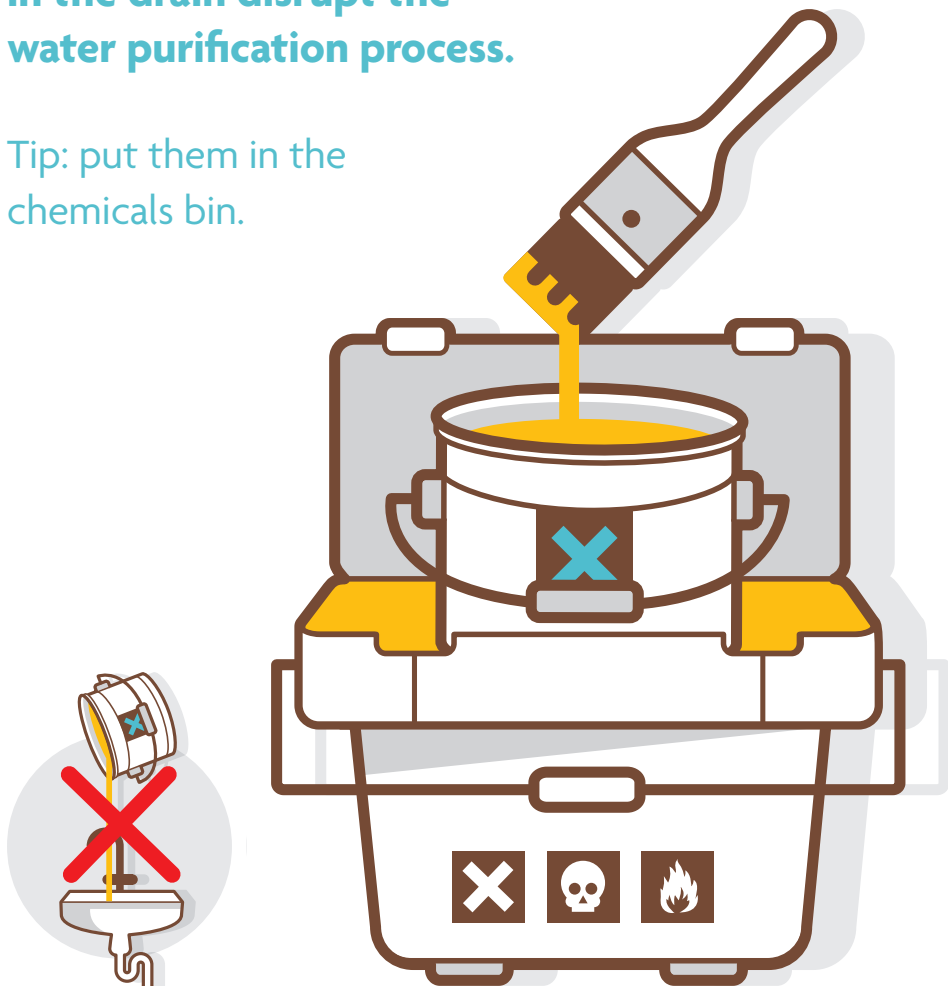


# PAINT?

## Not down the drain!

Paint residues and chemicals in the drain disrupt the water purification process.

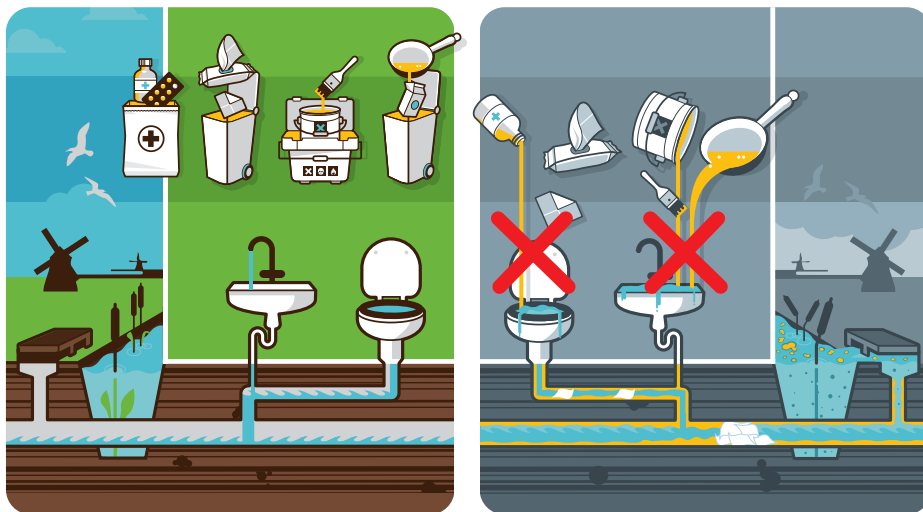
Tip: put them in the chemicals bin.



# Why practise good drain use?

Properly functioning drains are important for public health. Waste water in the drains is purified, so that it can go back clean into nature.

You can contribute to properly functioning drains and clean water by only using the toilet for what it's intended for: poo, wee and toilet paper!



f nietinhetriool | e @nietinhetriool | w www.nietinhetriool.nl

[Your logo]

Keep our water clean

NIET IN HET



RIJOL